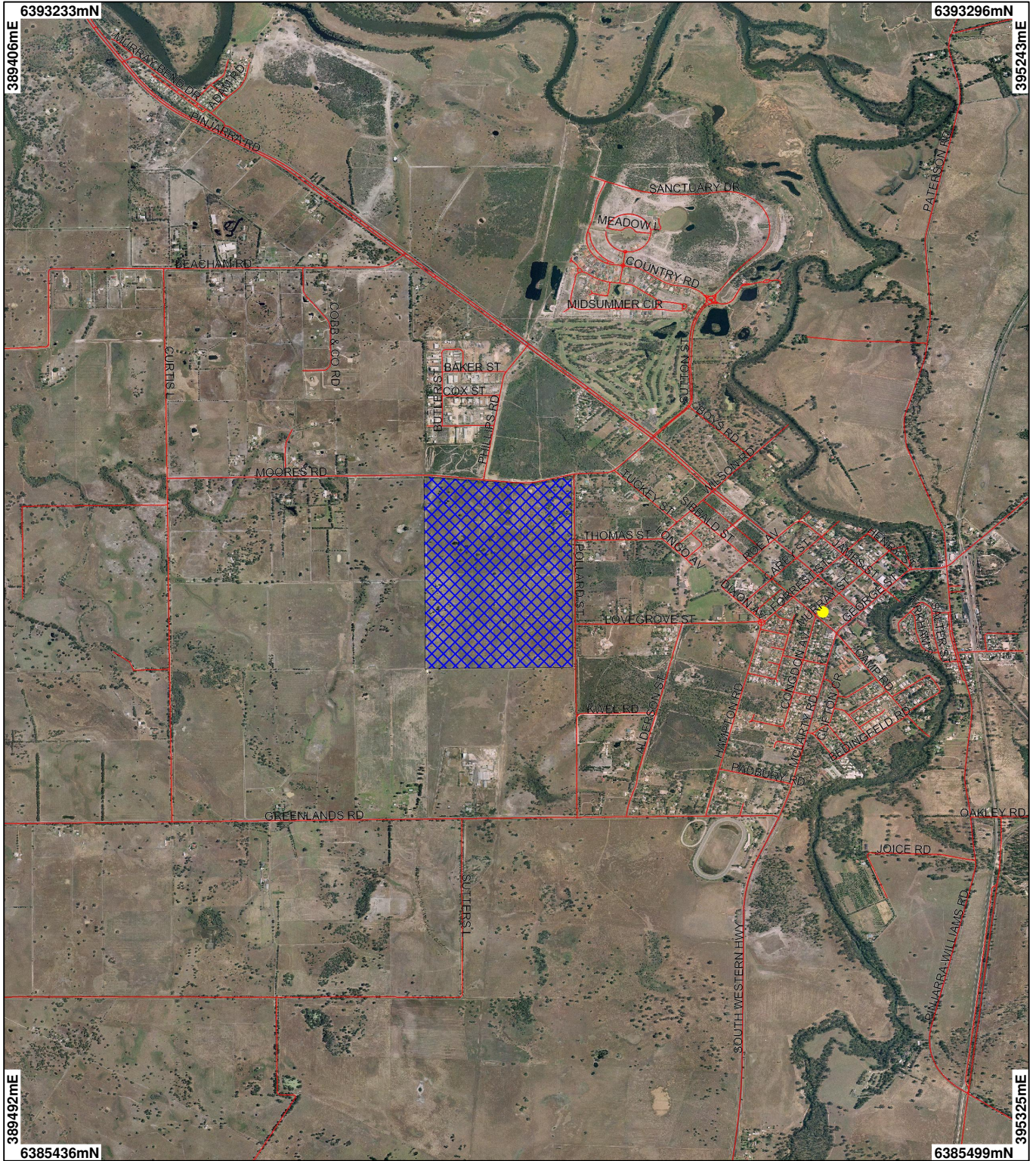


CPS 1447 LARGESCALE MAP



LEGEND

- Road Centrelines - DLI 1/5/04
- Towns - DLI 8/04
- CAWSA Part IIA Clearing Control Catchments - DOW
- Zone A
- Zone B (cont)
- Zone C
- Zone D
- Clearing Instruments**
- Areas Applied to Clear
- Areas Subject to Conditions
- Areas Approved to Clear
- Swan Coastal Plain South 1m Orthomosaic - DLI 01/04**
- Swan Coastal Plain South 1m Orthomosaic - DLI 03**
- Swan Coastal Plain South 1m Orthomosaic - DOLA 01/00**
- Swan Coastal Plain South 1m Orthomosaic - DOLA 01/02**
- Swan Coastal Plain South 40cm Orthomosaic - DLI 05**



Scale 1:35964

(Approximate when reproduced at A4)

Geocentric Datum Australia 1994

Note: the data in this map have not been projected. This may result in geometric distortion or measurement inaccuracies.

..... Date

Officer with delegated authority under Section 20 of the Environmental Protection Act 1986

Information derived from this map should be confirmed with the data custodian acknowledged by the agency acronym in the legend.



WA Crown Copyright 2002

* Project Data. This data has not been quality assured. Please contact map author for details.